

Community-Academic Engagement through Community Monitoring: Neighborhood Assessment Teams (“A” Teams)

Jessica Tovar, Long Beach Alliance for Children with Asthma

Andrea Hricko and Carla Truax
Community Outreach and Engagement Program
Southern California Environmental Health Sciences Center
University of Southern California

Asthma Coalition of Los Angeles County meeting
January 27, 2014

Environmental Health Centers based at University of Southern California

- Southern California Environmental Health Sciences Center
- www.usc.edu/medicine/scehsc
 - USC and UCLA scientists
 - Funded by NIEHS
 - Community Outreach and Engagement Core
- Children's Environmental Health Center

The Trade, Health, and Environment Impact Project



Terminal Island Freeway –
trucks heading to Union
Pacific rail yard



Existing Union
Pacific rail yard on
POLA land



Hudson School









LBACA

- <http://lbaca.org/>
- Community coalition
- partnership to improve the lives of children with asthma in the greater Long Beach

Who are the A-Team members?



Video

vimeo

Me Videos Create Watch Tools Upgrade Upload

Search



+VIDEOS



The Impact Project

from Impact Project 2 years ago / via Vimeo Desktop Uploader NOT YET RATED

A-Team trainings

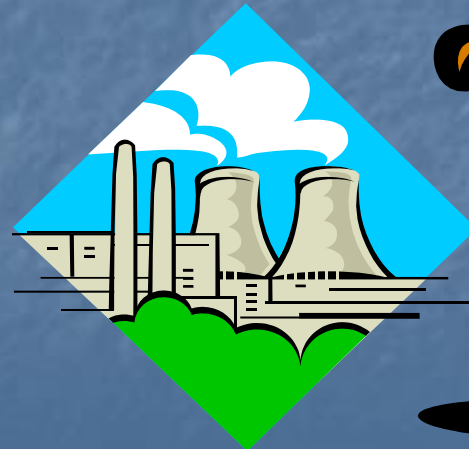
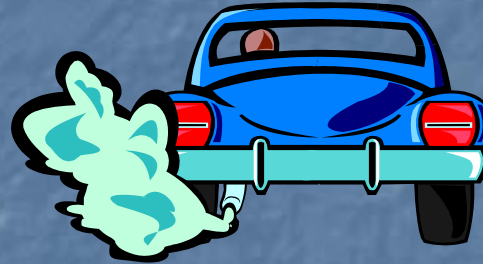
- Air pollution 101 training
 - Air pollutants

Where Does Air Pollution Come From? + What Kinds of Health Effects Does It Cause?



Important Air Pollutants

- Ozone (O_3)
- Particulate Matter (PM)
- Carbon Monoxide (CO)
- Nitrogen Dioxide (NO_2)
- Sulfur Dioxide (SO_2)



Particulate matter



USC Children's Health Study

- Children are more vulnerable to air pollution
- In the more polluted communities, children have:
 - More doctors' visits
 - More missed school days
 - Reduced lung growth and function
 - Makes asthma worse
 - More new cases of asthma near freeways



Monitoring and traffic counting

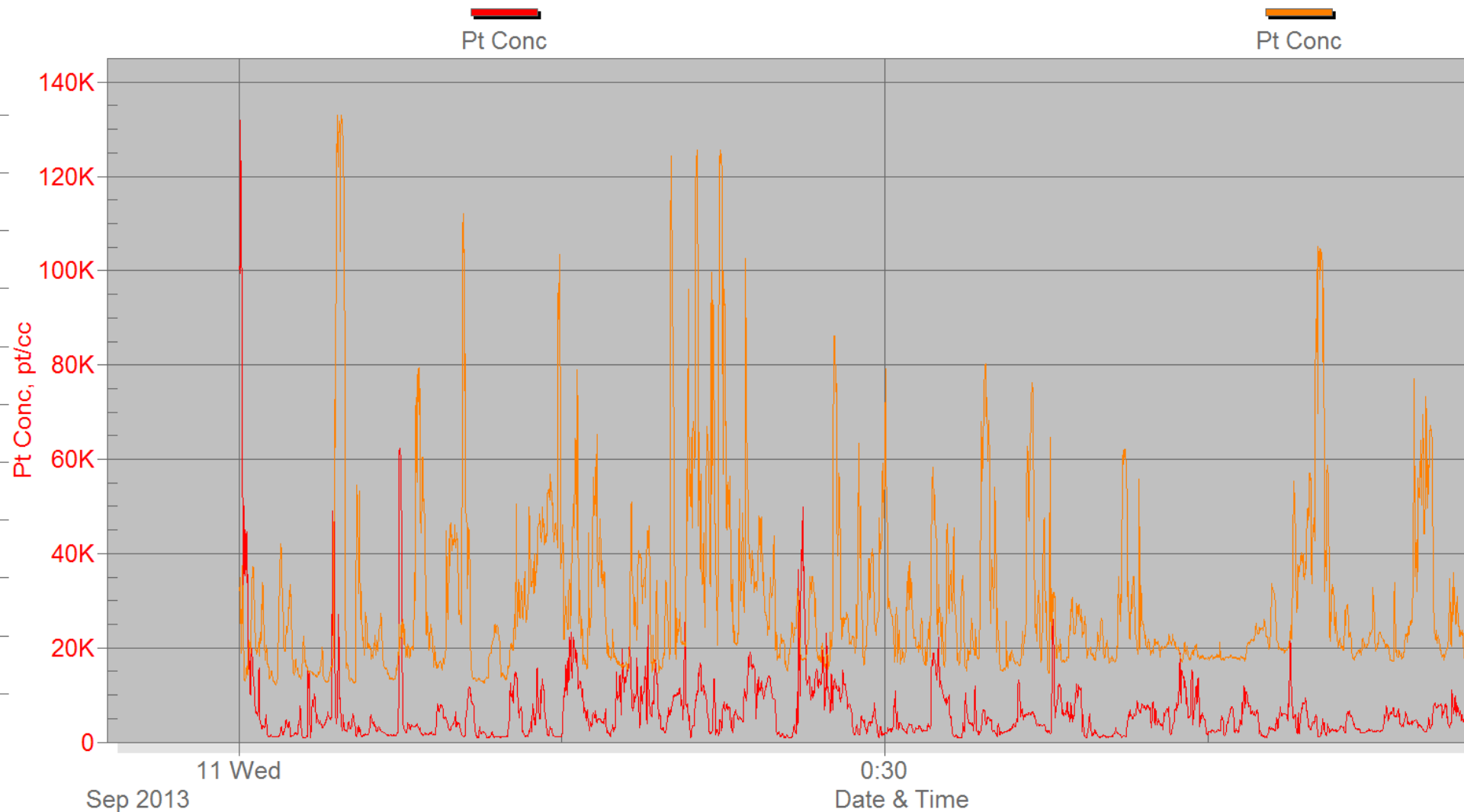


P-Trak

- P-Trak measures ultrafine particles
- Ultrafine particles are a good marker for traffic exhaust
- Measures number of particles per cubic centimeter
- Many factors can affect readings, including wind direction and speed



Comparison of particle levels Pacific Palisades and Commerce



USC kit

- A-Team field protocol
- Log sheet
- Presentation template
- P-Trak instructions
- Instructions for downloading and saving data
 - (English and Spanish)

A-Team Manual

- Instruction manual and case studies
- English and Spanish
- Download at:

<http://hydra.usc.edu/scehsc/web/>



Neighborhood Assessment Teams
*Case studies from Southern California and
instructions on community investigations
of traffic-related air pollution*

How have these methods been used?



Moving Forward Network

- Moving Forward conferences
- Sharing tools around the country



<http://themovingforwardnetwork.blogspot.com/>

Questions and discussion

- Are any other groups doing community-based monitoring?
- Questions or opinions on the instruction manual?

Thank you

Carla Truax
ctruax@usc.edu

Jessica Tovar

JMartinez6@memorialcare.org

Andrea Hricko
ahricko@usc.edu

www.usc.edu/medicine/scehsc

<http://hydra.usc.edu/scehsc/web/>

<http://lbaca.org/>